

INTERNATIONAL PhD PROGRAMME IN MAINZ



DYNAMICS OF

Gene Regulation,
Epigenetics &
DNA Damage

RESPONSE

ABOUT IMB'S INTERNATIONAL PHD PROGRAMME

Our International PhD Programme, which is supported by the Boehringer Ingelheim Foundation, gives talented and enthusiastic students the opportunity to undertake PhD research at the cutting edge of modern biology. **Projects** within the Programme will **address key questions** related to the overarching topic of **"Dynamics of Gene Regulation, Epigenetics and DNA Damage Response"**. Our groups cover a broad range of expertise and include leading biochemists; geneticists; cell and developmental biologists who study the molecular mechanisms of embryonic development, ageing and disease; bioinformaticians and systems biologists who analyse high-throughput datasets and model regulatory gene networks; and applied physicists who develop ground breaking super-resolution microscopes. This range of expertise and the open and vibrant atmosphere within the Programme encourages **multidisciplinary collaborations and innovative research**. Moreover, a range of scientific and social events are organised to ensure high levels of exchange and collaboration between the participating groups.

The Programme is coordinated by the Institute of Molecular Biology - a recently founded centre of excellence for research in Mainz, Germany. Participating groups are located at the:

- Institute of Molecular Biology (IMB)
- Johannes Gutenberg University (JGU)
- University Medical Center, Mainz (UMC)
- Max Planck Institute for Polymer Research (MPI-P)

For a full list of
participating groups,
please see:

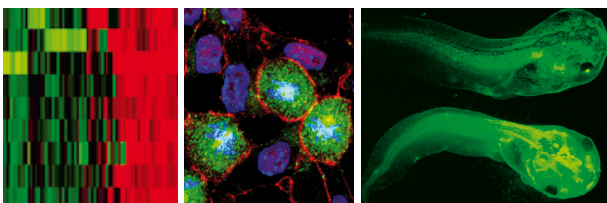
www.imb-mainz.de/PhD



BEING A PHD STUDENT IN OUR PROGRAMME

Your PhD research will be conducted within the lab of one of the participating groups. The Group Leader in whose lab you are based will act as your mentor and provide advice and guidance to ensure that you receive **training in** both the **scientific skills and the creative and critical thinking** abilities that you will need for your research and personal development as a scientist.

In addition to the supervision by their Group Leader, Fellows of the International PhD Programme will meet regularly with a **Thesis Advisory Committee** of leading scientists who will be there to support and advise you in your research. This provides an excellent opportunity to interact closely with a number of top scientists during the course of your study.



The research conducted by our **multinational team of PhD students** is vital to our work. As a consequence, we make sure that our PhD students receive **up-to-date training** in all the techniques and skills they need to succeed. Dedicated training courses will be held in a variety of topics that will aid your research. These include advanced microscopy, cytometry and cell sorting, the analysis of microarray and next generation sequencing data, statistics and bioinformatics. There will also be many opportunities for you to learn the **soft skills** that will form the basis of your career, whatever you go on to do. We offer courses in scientific writing skills, presentation skills, project management and conflict management. Taken together, these courses will ensure your work is as successful as possible and allow you to effectively plan, manage and communicate your research.

All our PhD students receive **generous, fully funded, fellowships** for a period of three years (with the possibility for extension).

INTERACTING WITH OTHER SCIENTISTS

The Programme and the participating institutions have a vibrant scientific atmosphere that includes regular presentations from leading international scientists and technology developers who update researchers here on the latest developments. In addition to these regular events, we also host a number of international conferences and workshops. Together, these events give researchers the opportunity to **hear about the latest research from around the world** and to **interact and form collaborations with those driving it**.

As part of the PhD Programme, we organise **annual retreats and symposia** at which our PhD students present their work in an informal setting and have the opportunity to meet their fellow students and other researchers. Furthermore, there will be plenty of **social events** that will allow you to get to know your colleagues.

We also encourage our students to present their work at national and **international conferences**, giving them further opportunities to network with other researchers.



ELIGIBILITY AND HOW TO APPLY

As IMB is an international institution, the first criterion for eligibility is that you are able to communicate in English, our working language. Secondly you should have, or be about to complete, a Masters or equivalent degree and have prior experience in a research environment.

Application to the Programme is competitive. The first step is to complete the online application form found in the student information section of IMB's webpage (www.imb-mainz.de/PhD). Shortlisted students will be invited to Mainz for interviews.

If you would like to know more about the Programme and the projects we offer, please see our website (www.imb-mainz.de/PhD). If you have any specific questions that we have not answered, please do not hesitate to get in touch with us at PhD@imb-mainz.de.



LIVING IN MAINZ

The city of Mainz is a **charming, open-minded city** that has been described as having the friendly atmosphere of a small city combined with the benefits of living in a large city. There is a diverse **multicultural population** with people from every walk of life living and working here. This creates a unique welcoming environment that makes it easy to settle into life here. The cosmopolitan nature of the city also makes life easy if you do not speak German and most Germans have English as a second language. Furthermore, many bars and restaurants provide English menus and there are cinemas that show English language films, as well as theatres that present English language productions.

Additionally, the **large student population** means that there is always something going on. Combined with the city's strong coffee shop and bar going culture this means you're never far from meeting new and exciting people.



OUR RESEARCH ENVIRONMENT

The Programme is embedded in a strong and dynamic research environment. The leafy campus of the **Johannes Gutenberg University** in **Mainz**, just west of the city centre, is home to 10 departments, 150 institutes and over 36,000 students, making the JGU one of the largest universities in Germany. In addition to the University, IMB and two **Max Planck Institutes** are located on campus and Mainz's **University of Applied Sciences** is an immediate neighbour. The **University Medical Center** is located just 2 km from the main campus and has strong focus on clinical and translational research.



Mainz is also surrounded by a number of towns and cities in which there are extensive research activities. For instance, **Frankfurt** is only 35 km away and is home to **Goethe University**, which has a total of 38,000 students and 10 research institutes within the Biochemistry, Chemistry and Pharmacy Department alone. Moreover, there are **several Max Planck Institutes** in Frankfurt (including the Max Planck Institute for Biophysics, the Max Planck Institute for Brain Research and the Ernst Strüngmann Institute for Cognitive Brain Research). In addition to Frankfurt, nearby **Darmstadt** is home to both a **Technical University**, whose Biology Faculty has a focus on synthetic biology, and an Applied Sciences University that includes a focus on biotechnology. Furthermore, there is an extensive industry R&D presence in the region, with the headquarters of **Boehringer Ingelheim** and the **Merck Group** both in close vicinity.

CONTACT



Christoph Stumm, PhD
Coordinator, International PhD Programme
Institute of Molecular Biology gGmbH (IMB)
Ackermannweg 4
55128 Mainz, Germany

Email: phd@imb-mainz.de

Web: www.imb-mainz.de/PhD

